

111798
P9c866

ON VIEW AT THE
FIFTH AVENUE ART GALLERIES

546 FIFTH AVENUE, NEW YORK

From Monday April 6th, until day of sale, inclusive

THE COLLECTION OF

Antique Art Objects

OF THE

XV. XVI. and XVII. Century. Oriental Porcelains, Ivories,
Enamels, Wood Carvings, Tapestries, Textiles, Rugs,
Jewelry. Elizabethan, Queen Anne, Chippen-
dale, Renaissance Gothic, Louis XV.
and XVI. Furniture, Garden Mar-
bles, Bronzes, Etc., Etc.

AND THE

GALLERY of PAINTINGS

OF OLD AND MODERN MASTERS

FORMED BY

KENNETH W. RICHARDSON

HENDON—LONDON

AT UNRESTRICTED PUBLIC SALE

Thursday, Friday and Saturday,

APRIL 9TH, 10TH AND 11TH, 1908

At 2.30 P. M. each day

Mr. James P. Silo will conduct the sale

THE ALEXANDER PRESS
18-20 Astor Place,
New York.

After May 1st, 1908, 114-116 West 27th Street

MACMILLAN'S DOLLAR NOVELS.

MACMILLAN & CO. beg to announce that they are now publishing a SERIES OF COPYRIGHT NOVELS, by well-known authors, at the uniform price of one dollar per volume.

MRS. HUMPHRY WARD'S NEW NOVEL: THE HISTORY OF DAVID GRIEVE.

By MRS. HUMPHRY WARD,

AUTHOR OF "ROBERT ELSMERE," ETC. *In the Press.*

- A STRANGE ELOPEMENT. By W. CLARK RUSSELL. With Illustrations by W. H. OVEREND. *Ready.*
- MARIAM. By HORACE VICTOR. *Ready.*
- DENZIL QUARRIER. By GEORGE GISSING, author of "Demos," etc. *In the Press.*
- THE LESSON OF THE MASTER, and other Stories. By HENRY JAMES. *In the Press.*
- GRANIA. The Story of an Island. By the Hon. EMILY LAWLESS. *In the Press.*
- MUCKLE JOCK, and other Stories of Peasant Life in the North. By the late MALCOLM MCLENNAN. *In the Press.*
- NEVERMORE. By ROLF BOLDREWOOD, author of "Robbery under Arms," etc. *In the Press.*
- ROBBERY UNDER ARMS. By ROLF BOLDREWOOD. *Ready.*
- ARNE, and THE FISHER LASSIE. By BJÖRNSSON. Translated from the Norse. *Ready.*
- THE BURNING OF ROME. A Story of the Days of Nero. With Coloured Illustrations. By the Rev. Prof. A. J. CHURCH. *Ready.*
- TIM: A Story of School Life. By a New Writer. *Ready.*
- CECILIA DE NOËL. By LANOE FALCONER, author of "Mademoiselle Ixe." *Ready.*
- BLANCHE, LADY FALAISE. By J. H. SHORTHOUSE, author of "John Inglesant." *Ready.*
- A SYDNEY-SIDE SAXON. By ROLF BOLDREWOOD. *Ready.*
- LIFE'S HANDICAP. Stories of Mine Own People. By RUDYARD KIPLING. *Ready.*
- THE WITCH OF PRAGUE. A Fantastic Tale. By F. MARION CRAWFORD. With numerous Illustrations. *Ready.*

MACMILLAN & CO.,
112 FOURTH AVENUE, NEW YORK.

NEW UNIFORM EDITION OF
F. MARION CRAWFORD'S NOVELS.

MESSRS. MACMILLAN & Co.
*have much pleasure in an-
 nouncing that they are about
 to issue a New Edition of*
F. Marion Crawford's Novels
*in monthly 12mo volumes, in
 uniform cloth binding, at One
 Dollar per volume. The vol-
 umes will be issued in the fol-
 lowing order:—*



F. MARION CRAWFORD.

MR. ISAACS. A Tale of Modern India	- - -	JANUARY.
DOCTOR CLAUDIUS	- - -	FEBRUARY.
ZOROASTER	- - -	MARCH.
THE THREE FATES. A New Novel	- - -	APRIL.
A TALE OF A LONELY PARISH	- - -	MAY.
SARACINESCA	- - -	JUNE.
MARZIO'S CRUCIFIX	- - -	JULY.
WITH THE IMMORTALS	- - -	AUGUST.
GREIFENSTEIN	- - -	SEPTEMBER.
SANT' ILARIO	- - -	OCTOBER.
A CIGARETTE-MAKER'S ROMANCE	- - -	NOVEMBER.
KHALED. A Tale of Arabia	- - -	DECEMBER.
THE WITCH OF PRAGUE	- - -	JANUARY.

MACMILLAN & CO.,
 112 FOURTH AVENUE, NEW YORK.

WORKS BY HENRY JAMES.

A NEW VOLUME OF STORIES.
THE LESSON OF THE MASTER,
AND OTHER STORIES.

12mo, cloth extra, \$1.00. *Just Ready.*

THE PRINCESS CASAMASSIMA.

12mo, \$1.25.

We find no fault with Mr. Henry James's "Princess Casamassima." It is a great novel; it is his greatest, and it is incomparably the greatest novel of the year in our language. . . . From first to last we find no weakness in the book; the drama works simply and naturally; the causes and effects are logically related; the theme is made literature without ceasing to be life.—*Harper's New Monthly Magazine, Editor's Study.*

THE REVERBERATOR.

12mo, \$1.00.

The public will be glad to find Mr. James in his best vein. One is thankful again that there is so brilliant an American author to give us entertaining sketches of life.—*Boston Herald.*

THE ASPERN PAPERS,
AND OTHER STORIES.

12mo, \$1.00.

The stories are told with that mastery of the art of story-telling which their writer possesses to a conspicuous degree.—*Literary World.*

PARTIAL PORTRAITS.

12mo, \$1.75.

Henry James has never appeared to better advantage as an author than in this delightful volume of critical essays.—*Boston Saturday Evening Gazette.*

THE BOSTONIANS.

12mo, \$1.25.

Unquestionably "The Bostonians" is not only the most brilliant and remarkable of Mr. James's novels, but it is one of the most important of recent contributions to literature.—*Boston Courier.*

A LONDON LIFE,
AND OTHER STORIES.

12mo, \$1.00.

His short stories, which are always bright and sparkling, are delightful. . . . Will bear reading again and again.—*Mail and Express.*

FRENCH POETS AND NOVELISTS.

12mo, \$1.50.

MACMILLAN & CO.,
112 FOURTH AVENUE, NEW YORK.

WORKS BY MRS. HUMPHRY WARD.

THE HISTORY OF DAVID GRIEVE.

12mo, cloth, \$1.00. *Shortly.*

ROBERT ELSMERE.

12mo, cloth, \$1.00; Library Edition, 2 Vols., \$3.00.

The book is a drama in which every page is palpitating with intense and real life. It is a realistic novel in the highest sense of the word.—*The Whitehall Review.*

Comparable in sheer intellectual power to the best works of George Eliot. . . . Unquestionably one of the most notable works of fiction that has been produced for years.—*The Scotsman.*

MR. GLADSTONE writes of this Novel in the "Nineteenth Century."

The strength of the book seems to lie in an extraordinary wealth of diction, never separated from thought; in a close and searching faculty of social observation; in generous appreciation of what is morally good, impartially exhibited in all directions; above all in the sense of omission with which the writer is evidently possessed, and in the earnestness and persistency of purpose with which through every page and line it is pursued. The book is eminently an offspring of the time, and will probably make a deep, or at least a very sensible impression; not, however, among mere novel-readers, but among those who share, in whatever sense, the deeper thought of the period.

AMIEL'S JOURNAL.

THE JOURNAL INTIME OF HENRI-FRÉDÉRIC AMIEL.

TRANSLATED, WITH AN INTRODUCTION AND NOTES.
WITH A PORTRAIT.

New and Cheaper Edition. 12mo, \$1.25.

A wealth of thought and a power of expression which would make the fortune of a dozen less able works.—*Churchman.*

A work of wonderful beauty, depth, and charm. . . . Will stand beside such confessions as St. Augustine's and Pascal's. . . . It is a book to converse with again and again; fit to stand among the choicest volumes that we esteem as friends of our souls.—*Christian Register.*

MISS BRETHERTON.

12mo, cloth (uniform with "Robert Elsmere"), \$1.25.

It shows decided character and very considerable originality. . . . It is full of earnest womanly sympathy with the ambitions of a beautiful girl placed in false and difficult positions by good fortune, which may possibly turn to misfortune. . . . We are impressed throughout by the refinement and the evidence of culture which underlie all the book, though they are seldom or never obtruded.—*London Times.*

MILLY AND OLLY;

OR, A HOLIDAY AMONG THE MOUNTAINS.

16mo, \$1.00.

ILLUSTRATED BY MRS. ALMA-TADEMA.

The present season will scarcely see a more charming addition to children's literature than this of Mrs. Ward's. Her book has seemed to us all that a Christmas gift for a child should be.—*Academy.*

MACMILLAN & CO.,

112 FOURTH AVENUE, NEW YORK.

63930403

NYFX 98
P36866

ORDER OF SALE

Thursday, April 9, 1908, at 2.30 p. m.

The Collections of Chippendale, Italian, and French Furniture, Engravings, etc.

Friday, April 10, 1908, at 2.30 p. m.

The Collections of Faiences, Bronzes, Renaissance, Chippendale, and Louis XV. and XVI. Furniture, Textiles.

Saturday, April 11, 1908, at 2.30 p. m.

The Collections of Antique Objets d'Art, Renaissance, and Gothic Furniture, Garden Marbles, Tapestries, Textiles, Jewelry.

Saturday Evening, April 11 1908, at 8.15 p. m.

The Gallery of Paintings of Old and Modern Masters.

Frick Art Reference Library

NYFX02-P1275

9/22/02

Newhouse Galleries

CONDITIONS OF SALE.

1. The highest bidder to be the buyer, and if any dispute arise between two or more bidders, the lot so in dispute shall be immediately put up again and re-sold.

2. The purchasers to give their names and addresses and to pay down a cash deposit, or the whole of the purchase money, if required, in default of which the lot or lots so purchased to be immediately put up again and re-sold.

3. The lots to be taken away at the buyer's expense and risk upon the conclusion of the sale and the remainder of the purchase money to be absolutely paid or otherwise settled for to the satisfaction of the auctioneer, on or before delivery; in default of which the undersigned will not hold himself responsible if the lots be lost, damaged or destroyed, but they will be left at the sole risk of the purchaser.

4. The lots to be taken away and paid for, whether genuine and authentic or not, with all faults and errors of description, at the buyer's expense and risk, within **Two Days** from the sale. Neither the sellers nor **The Fifth Avenue Art Galleries** being responsible for the correct description, genuineness, or authenticity of, or any fault or defect in any lot, and neither making any warranty whatever.

5. To prevent inaccuracy in delivery, and inconvenience in settlement of the purchases, no lot can on any account be removed during the sale.

6. If, for any cause, an article purchased cannot be delivered in as good condition as the same may have been at the time of its sale, or should any article purchased thereafter be stolen or misdelivered, or lost, neither the sellers nor the undersigned are to be held liable in any greater amount than the price bid by the purchaser.

7. Upon failure to comply with the above conditions, the money deposited in part payment shall be forfeited, all lots uncleared within the time aforesaid shall be re-sold by public or private sale, without further notice, and the deficiency, if any, attending such re-sale shall be made good by the defaulter at this sale, together with all charges attending the same. This condition is without prejudice to the right of the Auctioneer to enforce the contract made at this sale, without such re-sale if he thinks fit.

THE FIFTH AVENUE ART GALLERIES are in no ways responsible for the charges or manner of delivery of goods purchased at their sale.

JAS. P. SILO, Auctioneer.

CATALOGUE

FIRST AFTERNOON'S SALE

THURSDAY, APRIL 9th, 1908.

Beginning promptly at 2.30 o'clock.

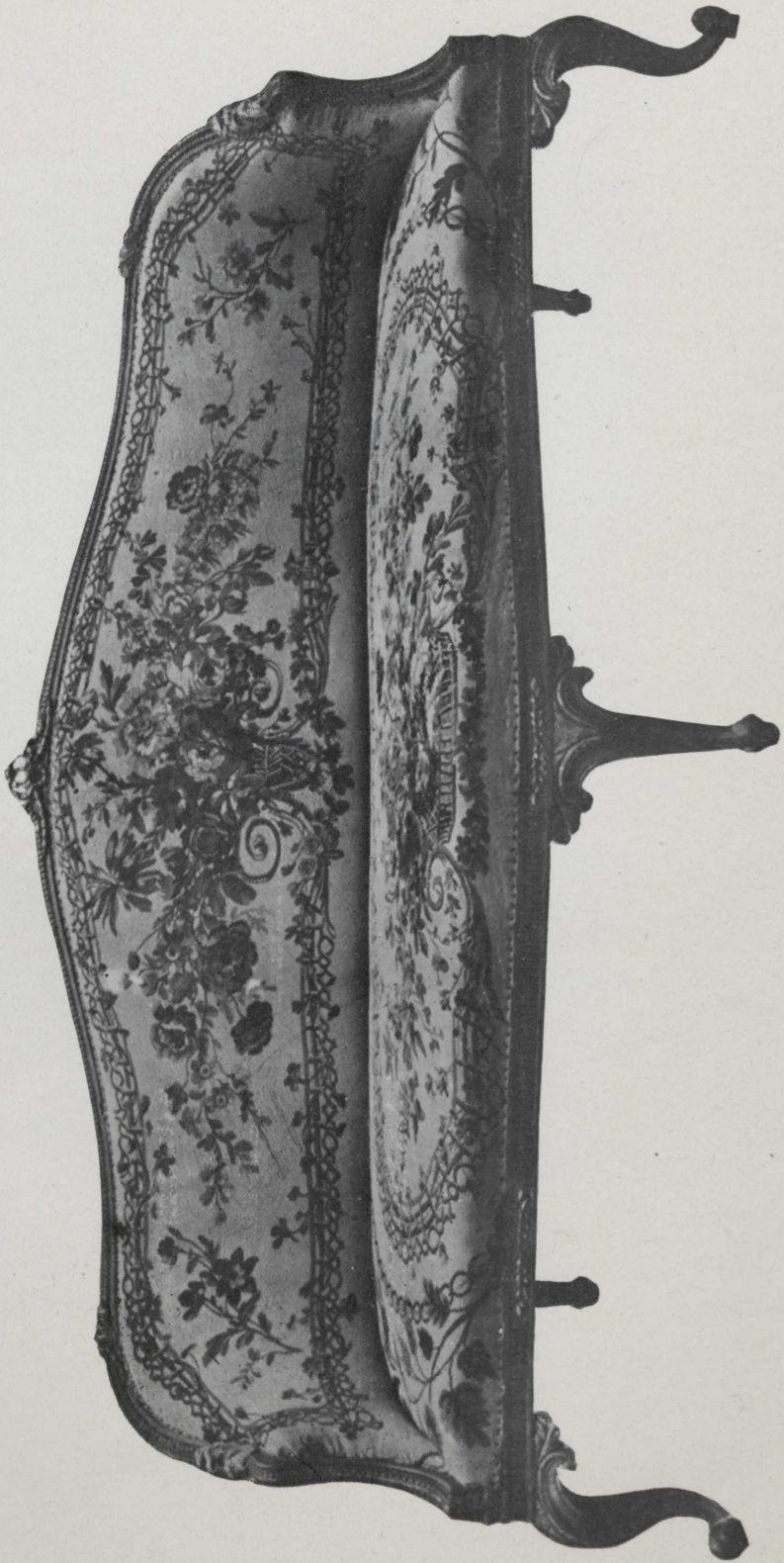
ENGRAVINGS.

- 1 — LES CONFIDENCES.
- 2 — LE JEN DE CACHE CACHE.
- 3 — LA TOILETTE.
- 4 — L'ANNABLE JARDINIÈRE.
- 5 — PIERROT CONTENT, d'après Watteau.
- 6 — RENDEZ VOUS DE CHASSE, d'après Watteau.
- 7 — LE COUCHER DE LA MARIÉE.
- 8 — LES CONFIDENCES.
- 9 — LA PROMENADE DU SOIR.

- 10 — L'OCCUPATION.
- 11 — LE JEN DES QUATRES COINS.
- 12 — L'EVENEMENT AU BAL.
- 13 — LA PROMENADE DU SOIR.
- 14 — LA PROMENADE DU MATIN.
- 15 — L'OCCUPATION.
- 16 — LE LOVER.
- 17 — LE COUCHER.
- 18 — LILLE DE CITHERE, d'apres Watteau.
- 19 — LA LAITIERE, d'apres Jean Baptiste Greuze.
- 20 — LE BOUDOIR.
- 21 — ANTIQUE MAHOGANY CHAIR. Richly carved.
Red damask seat.
- 22 — ANTIQUE CHIPPENDALE CHAIR. Odd shape. Silk
damask seat.
- 23 — MAHOGANY TABLE. Richly carved. Lyre shape.
- 24 — LOUIS XV. TABLE. Carved and gilded. Marble
top.

- 25 — ANTIQUE MAHOGANY TABLE. Triangular shape.
- 26 — ANTIQUE CHIPPENDALE ARM CHAIR. Handsomely carved. Upholstered in red damask.
- 27 — ITALIAN TABLE. Veneered in marqueterie. Coat of arms.
- 28 — ITALIAN CHAIRS. Elaborately carved. Green velvet seats. Set of two.
- 29 — ANTIQUE CHIPPENDALE PIANO STOOL. Red damask seat.
- 30 — LOUIS XVI. CHAIRS. Daintily carved. Green silk brocade covers. Set of two.
- 31 — LOUIS XVI. ETAGERE. Carved and gilded. Cane shelves.
- 32 — LOUIS XVI. SETTEE. Richly carved. Garland design.
- 33 — ANTIQUE MAHOGANY STOOL. Green damask seat.
- 34 — ANTIQUE CHIPPENDALE CHAIRS. Richly carved. Red damask seat. Set of two.
- 35 — MAHOGANY TEA TABLE. Lyre shape. Glass tray.
- 36 — ANTIQUE CHIPPENDALE SOFA. Richly carved. Red damask seat.

- 37 — BRONZE COMPOTIERE. Louis Phillipe period.
Faience dish.
- 38 — ITALIAN MIRROR. Richly carved frame of flower
design.
- 39 — ITALIAN SAVONAROLA. Carved in walnut. Hall
chair.
- 40 — EMPIRE ARM CHAIR. Handsomely carved. Bronze
mounts.
- 41 — LOUIS XVI. FIRE SCREEN. Daintily carved frame.
Silk brocade panel.
- 42 — LOUIS XV. CONSOLE. Elaborately carved. Gar-
land design. Marble top.
- 43 — OLD ITALIAN VASE. Urbino. Rare XVII. Cen-
tury.
- 44 — OLD ITALIAN PLATE. Caffajiolo. XVII. Century.
- 45 — OLD CARVED WOOD FIGURE. Representing a Saint.
- 46 — OLD RENAISSANCE BRACKET. Carved with Cupid.
- 47 — EMBROIDERED COAT OF ARMS. Set of two.
- 48 — OLD ITALIAN JUG. Faenza. XVII. Century.



- 49 — OLD ITALIAN CHAIRS. Carved in oak. Green damask seats. Set of four.
- 50 — OLD CHIPPENDALE TABLE. Red lacquer top. Richly carved.
- 51 — CHIPPENDALE ARM CHAIR. Richly carved. Upholstered in green silk damask.
- 52 — LOUIS XV. ARM CHAIRS. Daintily carved. Upholstered in silk brocade. Set of two.
- 53 — OLD SPANISH CHAIRS. Leather covered seats and backs handsomely carved. Set of four.
- 54 — ETAGERE CANDELABRA. Handsomely carved. Cupid holding candles.
- 55 — OIL ENGLISH TABLE. Satinwood top. Slender legs.
- 56 — OLD MAHOGANY ARM CHAIR. Richly carved design of animal at the arms. Red damask.
- 57 — OLD MAHOGANY STOOL. Slender carved legs. Green damask cover.
- 58 — LOUIS XVI. SELLETTE. Handsomely carved in garland design. Buck's feet.
- 59 — LOUIS XVI. CONSOLE AND MIRROR. Carved and gilded. Garland design. Old Print.

- 60 — ITALIAN SAVONAROLA. Carved in walnut, with hall seat.
- 61 — ANTIQUE EMPIRE ARM CHAIR. Richly carved in mahogany. Bronze mounts.
- 62 — OLD ENGLISH CHAIRS. Richly carved in mahogany. Swan design. Set of six.
- 63 — ANTIQUE COMBINATION BAROMETER. Italian. XVII Century.
- 64 — MARBLE BUST. Of fine Carrara.
- 65 — ANTIQUE ITALIAN TABLE. Inlaid in a variety of woods. Slender legs.
- 66 — OLD ITALIAN MIRROR. Richly carved and gilded. Painted coat of arms.
- 67 — EMPIRE CHAIR. In mahogany. Rich bronze
- 68 — ANTIQUE WINDOW SEAT. Richly carved, and veneered in mahogany.
- 69 — ANTIQUE BRONZE ANDIRONS. Massive bronze top. XVII. Century. Set of two.
- 70 — ANTIQUE ARM CHAIRS. Richly carved. Cane seats. Set of two.

- 71 — ANTIQUE CHAIRS. Richly carved. Cane seats. Set of four.
- 72 — LOUIS XVI. BERGERE. Carved and gilded wood frame. Upholstered in green silk damask.
- 73 — EMPIRE TABLE. Carved in mahogany; ornamented with rich bronze mounts.
- 74 — LOUIS XVI. BANQUETTE. Cane seat, richly carved, silk damask seat.
- 75 — LOUIS XV. ARM CHAIR. Very richly carved. Upholstered in yellow silk damask.
- 76 — ANTIQUE CARVED WOOD VASES. Rich design. Set of two.
- 77 — BRONZE ANDIRONS. Ornamented with figures of lions in dark bronze.
- 78 — LOUIS XVI. FIRE SCREEN. Richly carved frame. Panel of silk brocade.
- 79 — OLD CHIPPENDALE CHAIRS. Daintily carved. Set of two.
- 80 — ANTIQUE CARVED WOOD FRAME. Daintily carved ornamentation, with heads of Cupids.
- 81 — OLD ITALIAN PLATE. Montelupo decorations of birds. XVII. century.

- 82 — SILVER ROSEWATER BOTTLE. Repousse and engraved decoration. Filigree neck.
- 83 — TURKISH KNIFE. Silver sheath, and handle engraved in fish scale pattern.
- 84 — OLD DAGGER. In bronze. Richly chiseled with figures. XVII. Century.
- 85 — OLD GILT ADAMS STANDS. Handsomely carved. Set of two.
- 86 — LOUIS XVI. BERGERE. Handsomely carved frame. Upholstered in silk brocade.
- 87 — URBINO PLATE. Italian decorations of birds and flowers. XVI. Century.
- 88 — OLD ADAMS ARM CHAIRS. Richly carved. Upholstered in silk brocade. Set of two.
- 89 — OLD PERSIAN NEEDLE BOX. Covered with fine needlework. Soft Colors. XVI. Century.
- 90 — ANTIQUE ITALIAN BOX. In leather. Ornamented with brass nails. Crest.
- 91 — ANTIQUE ITALIAN SIDE CHAIRS. Covered in fine red damask. Set of two.
- 92 — OLD ITALIAN CHALICE. Of very fine form. XVI. Century.

- 93 — BRONZE FENDER. Richly chiselled. Ornamented with bronze figures.
- 94 — LOUIS XVI. HAT RACK. Daintily carved in enamel and gilt.
- 95 — OLD ITALIAN ARM CHAIR. Handsomely carved. Gilt leaf top. XVII. Century.
- 96 — LOUIS XV. ARM CHAIR. Richly carved frame. Upholstered in silk brocade.
- 97 — ANTIQUE ENGLISH TABLE. Daintily carved. Combination drawers.
- 98 — ANTIQUE ENGLISH CHAIRS. Silk damask seats. Set of two.
- 99 — EMPIRE ARM CHAIR. Veneered in mahogany. Ornamented with bronze mounts.
- 100 — OLD QUEEN ANNE CHIPPENDALE SETTEE. Richly upholstered in red silk damask.
- 101 — LOUIS XV. ARM CHAIRS. Richly carved. Upholstered in silk damask. Set of two.
- 102 — OLD ENGLISH TABLE. Highly veneered and richly carved. Round top.
- 103 — CONSTANTINOPLE WARE PLAQUE. Decorations of flowers in blue and white.

- 104 — OLD ITALIAN PLATE. Richly decorated with figures. Montelupo. XVII. Century.
- 105 — EMBROIDERED COAT OF ARMS. Set of two.
- 106 — OLD EMPIRE CLOCK. Richly chiselled and mercury gilded. Ornamented with figure.
- 107 — PERSIAN PLAQUE. Flower design, blue and white decorations.
- 108 — CELADON PLAQUE. Inlaid decoration of scroll pattern.
- 109 — PERSIAN PLAQUE. Rich floral decoration in soft blue and white.
- 110 — CELADON PLAQUE. Incised decoration of floral pattern. Green glaze.
- 111 — ITALIAN PLAQUE. Cream white glaze. Escutcheon in colors.
- 112 — OLD QUEEN ANNE CHAIRS. Chippendale. Richly carved. Set of two.
- 113 — LOUIS XV. STOOL. Very richly carved. Silk brocade cover.
- 114 — LOUIS XV. SCREEN. Daintily carved frame. Silk brocade panels. Three-fold.

- 115 — LOUIS XV. FENDER. In bronze. Ornamented with dark bronze figures.
- 116 — OLD CHIPPENDALE CHAIRS. Richly carved. Set of two.
- 117 — CITRON WOOD DESK. Richly veneered in a variety of woods. Dainty design.
- 118 — ANTIQUE PERSIAN VASE. Black decorations on blue ground. Kachan.
- 119 — OLD PERSIAN PLATE. Cruche design. Blue and black decorations.
- 120 — OLD BOUKHARA PLATE. Rich blue decorations. XVI. Century.
- 121 — OLD BOUKHARA PLATE. Blue and white decorations. Dagger in centre.
- 122 — ANTIQUE ITALIAN JUG. Rich decorations, showing escutcheon. Pistora. XVI. Century.
- 123 — OLD FAENZA VASE. Rare decorations. XVII. Century.
- 124 — OLD PERSIAN PLATE. Blue decorations of birds on black glaze.
- 125 — ADAMS ARM CHAIRS. Daintily carved. Upholstered in cream silk damask. Set of two.

- 126 — OLD CHIPPENDALE CHAIRS. Lyre shape. Silk damask seats. Set of 4.
- 127 — ANTIQUE CHURCH CANDLESTICKS. In carved wood. Italian. XVII Century. Set of two.
- 128 — ANTIQUE ITALIAN CHAIRS. Richly carved. Set of two.
- 129 — LOUIS XV. BANQUETTE. Richly carved and gilded. Cane seat.
- 130 — OLD CHIPPENDALE MIRROR. Rich carved wood frame.
- 131 — ANTIQUE ENGLISH CHAIRS. Richly carved. Silk damask seat. Set of two.
- 132 — LOUIS XV. BERGERE. Very handsomely carved. Upholstered in yellow silk damask.
- 133 — ANTIQUE TURKISH PISTOL. Butt of wood. Decoated in silver.
- 134 — OLD TURKISH CARBINE. Flint lock. Butt of carved wood, inlaid with silver.
- 135 — OLD QUEEN ANNE CHAIRS. Chippendale. Beautifully carved. Claw feet. Set of two.
- 136 — ANTIQUE CAMEO. Representing bust of woman.



- 137 — IVORY BREASTPIN. Richly carved in design of flower basket.
- 138 — IVORY AND GOLD BOX. Louis Phillipe period.
- 139 — IVORY FIGURE. Representing Cupid at Play.
- 140 — OLD MINIATURE ON PORCELAIN.
- 141 — OLD SILVER WATCH. Marked Quare, London. About 1720.
- 142 — ANTIQUE CAMEO. Representing head of woman.
- 143 — FRENCH BROCADE COVER. Design of flower sprays on clash of gold.
- 144 — VENETIAN VELVET PANEL. Floral and scroll patterns in red soft ground.
- 145 — EMBROIDERED ESCUTCHEONS. Rich embroidery of gold and silk. Set of two.
- 146 — PANEL OF VENETIAN VELVET. Design of berries and vines on green ground.
- 147 — SMALL BROCADE COVER. Large scroll pattern and flowers. Soft tones.
- 148 — KHIVA VELVET PANEL. Design of small stripes.

- 149 — OLD VENETIAN VELVET. Floral and arabesque patterns. On silver ground.
- 150 — BROCADE COVER. Cloth of gold flower sprays in silver.
- 151 — ANTIQUE CHIPPENDALE CHAIRS. Richly carved Set of two.
- 152 — LOUIS XV. CONSOLE AND MIRROR. Daintily carved. Garland design.
- 153 — LOUIS XV. SECRETAIRE. Veneered in citron wood. Ornamented with clock.
- 154 — BRONZE FIGURE. Representing an Asiatic. Rich chiseling. Dark patina.
- 155 — LOUIS XV. PARLOR SUITE. Richly carved and gilded frames. Upholstered in silk damask. Sofa, 2 arm chairs; 2 chairs.
- 156 — LOUIS XV. SALON TABLE. Daintily carved and gilded. Marble top.
- 157 — OLD ADAMS SETTEE. Handsomely carved. Upholstered in red silk damask.
- 158 — OLD CHIPPENDALE CHAIRS. Richly upholstered in red silk damask. Set of two.

- 159 — OLD CHIPPENDALE SETTEE. Richly upholstered in red silk damask.
- 160 — OLD ELIZABETHAN OAK TABLE. Handsomely carved. Rare shape.
- 161 — OLD BOUKHARA PLATE. Design representing the sun. XVII. Century.
- 162 — OLD PERSIAN PLATE. Conventional design, on blue ground.
- 163 — OLD BOUKHARA PLATE. Flower design, surrounding sun.
- 164 — OLD PERSIAN VASE. Rich decorations. XVI. Century.
- 165 — LOUIS XV. ARM CHAIRS. Richly carved. Upholstered in cream brocade.
- 166 — LOUIS XVI. PEDESTAL. African marble. Bronze mounts.
- 167 — OLD CHIPPENDALE SETTEE. Richly upholstered in red silk damask.
- 168 — LOUIS XVI. PEDESTAL. African marble. Bronze mounts.
- 169 — LOUIS XVI. SALON TABLE. Richly carved and gilded wood. Marble top.

- 170 — OLD ENGLISH CLOCK. In bronze. Marked Chr.,
Frid, Vogel, Thorn, 409.
- 171 — INDIAN EMBROIDERED HANGING. Leaf pattern.
Ornamented with mirrors.
- 172 — PANEL OF KHIVA VELVET. Geometrical design in
soft colors. Framed.
- 173 — PANEL OF VENETIAN VELVET. Tan and cream
ground. Medallion of soft olive hue. Framed.
- 174 — LARGE KHIVA VELVET HANGING. Rich emerald
green centre. Arabesque border.
- 175 — ELIZABETHAN HIGH BACK CHAIR. Old Chippen-
dale. Very handsomely carved.
- 176 — OLD PISTOL, FLINT LOCK. Butt of carved wood,
silver mounted.
- 177 — SMALL CARBINE. Flint lock. Barrel decorated
with chasing. Carved wood butt.
- 178 — OLD BATTLE AX. Elaborate decoration of ara-
besque design, damascened in silver.
- 179 — OLD FLINT LOCK GUN. Stock elaborately inlaid
with silver and mother of pearl.
- 180 — ANTIQUE ITALIAN CHAIR. Covered in old green
damask.

- 181 — ANTIQUE ITALIAN CHAIR. Leather, delicately tooled in gold.
- 182 — ANTIQUE ITALIAN TABLE. Veneered in a variety of woods. Escutcheon.
- 183 — ANTIQUE ITALIAN CHAIR. Seat covered in green velours. Green and gold velvet back.
- 184 — EMBROIDERED ESCUTCHEONS. In silk and gold. Set of two.
- 185 — EMBROIDERED ESCUTCHEON. Large size. Rampant lion.
- 186 — OLD VENETIAN VELVET. Brilliant red and green floral design, on cream ground.
- 187 — KHIVA VELVET HANGING. Arabesque border.
- 188 — OLD QUEEN ANNE CHAIRS. Rare shape. Green damask seats. Set of six.
- 190 — ANTIQUE KOULA RUG. Rich mosque design on red ground. Size, 5.2x4.0.
- 191 — OLD KURDISTAN RUG. Conventional design, on red ground. Size, 6.0x3.8.
- 192 — OLD GHORDEZ RUG. Rare mosque design, cream design. Size, 5.6x3.7.

- 193 — FINE OLD BOKHARA RUG. Prayer design. Rich effect. Size, 4.7x3.10.
- 194 — CHOICE BELOOCHISTAN RUG. Unusual design. Size, 5.4x4.2
- 195 — ROYAL PERSIAN RUG. Meshed weave. Dark blue ground. Size, 10x5.7.
- 196 — OLD GHORDEZ RUG. Fine prayer design on cream ground. Size, 5.2x3.10.
- 197 — OLD KOULA RUG. Rare mosque design on reddish ground. Size, 5.5x3.8
- 198 — ANTIQUE MOSQUE RUG. Bokhara weave. Dark, rich hues. Size, 6.4x4.
- 199 — RARE PERSIAN RUG. Beloochistan weave. Rich colorings. Size, 5.5x2.6.

SECOND AFTERNOON'S SALE

FRIDAY, APRIL 10th, 1908.

Beginning promptly at 2.30 o'clock.

- 200 — COLORED FRENCH ENGRAVING. Amusements
Champetres.
- 201 — PAINTING ON PORCELAIN. Le Repos.
- 202 — OLD ENGLISH CHAIRS. Daintily carved. Set of
two.
- 203 — OLD CHIPPENDALE STAND FOR COFFEE. Richly
carved.
- 204 — ANTIQUE ITALIAN SAVONAROLLA. Hall chair.
- 205 — ANTIQUE ENGLISH CHAIRS. Richly carved. Set
of two.
- 206 — ANTIQUE FLINT LOCK PISTOL. Stock and butt in-
laid with silver.
- 207 — OLD FLINT LOCK GUN. Stock and butt inlaid with
mother of pearl.
- 208 — FLINT LOCK PISTOL. Butt inlaid with metal.

- 209 — OLD ARAB GUN. Flint lock.
- 210 — OLD CARVED WOOD STANDS. Representing Dauphin. Gilded.
- 211 — LOUIS XV. CONSOLE. Richly carved frame. Garland design. Marble top.
- 212 — NAPOLEONIC ARM CHAIR. Richly carved in mahogany. Fine bronze mounts.
- 213 — OLD ENGLISH CLOCK. Wood frame. Bronze trimmings. Chippendale.
- 214 — OLD CARVED WOOD ETAGERE. Design of cupid. Italian. XVII. Century.
- 215 — ANOTHER.
- 216 — OLD GEORGIAN FLOWER STANDS. Richly carved and gilded. Set of two.
- 217 — ANTIQUE PERSIAN VASE. Richly decorated. Cashan make.
- 218 — OLD PERSIAN VASE. Same as the above.
- 219 — ANTIQUE PERSIAN JUG. Richly decorated on beautiful blue glaze.
- 220 — OLD RENAISSANCE CHAIRS. Covered with green velvet and embroidery of the period. Set of two.

- 221 — RHODIAN CUSHION COVER. Richly embroidered in colored silk on blue linen.
- 222 — LARGE EMBROIDERED COVER. Of graceful floral pattern, in cream silk and silver.
- 223 — OLD VENETIAN VELVET. Floral medallion in red pile on cream ground.
- 224 — ANTIQUE SPANISH HANGING. Yellow silk cord. Design: a shield and cross.
- 225 — OLD CHINESE VASE. Richly decorated in blue and white. Brown leaves. XVII. Century.
- 226 — OLD PISTOIA JUG. Fine decorations. Italian. XVII. Century.
- 227 — FAENZA JUG. Decorated with escutcheon. XVI. Century.
- 228 — MONTELUPO PLATE. Bold decorations. Medallion of figures. XVII. Century.
- 229 — OLD CHIPPENDALE TABLE. Very handsomely carved. Slender legs.
- 230 — OLD CHIPPENDALE ARM CHAIR. Richly carved. Upholstered with green velours.
- 231 — ANTIQUE ENGLISH TABLE. Highly veneered. Rare shape.

- 232 — OLD CHURCH CANDELABRA. Richly carved and gilded. Set of two.
- 233 — ANTIQUE FLORENTINE FRAME. Handsomely carved. XVII. Century.
- 234 — OLD ITALIAN MIRROR. In metal. Richly etched.
- 235 — OLD CHINESE VASE. Blue and white decorations. Subjects. XVII. Century.
- 236 — LOUIS XV. CONSOLE AND MIRROR. Richly carved frame. Marble top.
- 237 — LOUIS XVI. SCREEN. Handsomely carved and gilded. Silk damask panels. 3 folds.
- 238 — OLD EMPIRE STAND. Daintily carved in mahogany. Slender legs.
- 239 — OLD EMPIRE STAND. Companion to the above.
- 240 — ANTIQUE GENOESE VELVET BAND. In rich red hues. XVI. Century.
- 241 — EMBROIDERED ESCUTCHEONS. In gold and silk. Set of two.
- 242 — OLD EMBROIDERED PICTURE. Representing Madonna. XVI. Century.

- 243 — OLD ITALIAN CHASUBLE. In rich brocade of floral design. XVII. Century.
- 244 — STAHL MANIPLE AND BURSE.
- 245 — ANTIQUE ELIZABETHAN TABLE. Rare beauty and design.
- 246 — OLD CHIPPENDALE CHAIRS. Handsomely carved. Upholstered in silk damask. Set of two.
- 247 — OLD CHIPPENDALE ARMCHAIR. Same as the above.
- 248 — ANTIQUE ITALIAN ARMCHAIR. Richly carved. Gilt top. Covered in green silk damask.
- 249 — RENAISSANCE PRIE DIEU. Daintily carved of the period.
- 250 — OLD QUEEN ANN CHAIR. High back. Very richly carved. Old red velvet seat.
- 251 — CARVED WOOD FIGURE representing St. Michael. Gilded. XVI century.
- 252 — CARVED WOOD FIGURE representing St. Paul. Gilded. XVI Century.
- 253 — BRONZE FIGURE representing a Chinese idol.
- 254 — RENAISSANCE ANDIRONS. Bronze, richly chiselled. Ornamented with figures.

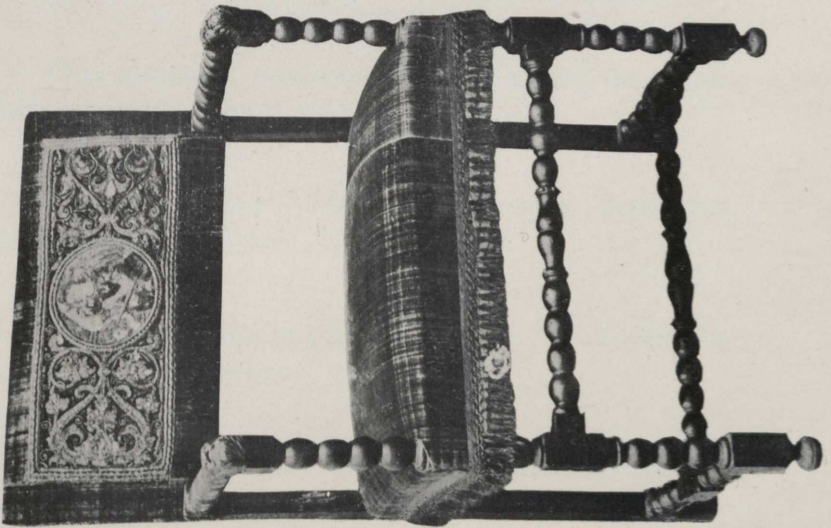
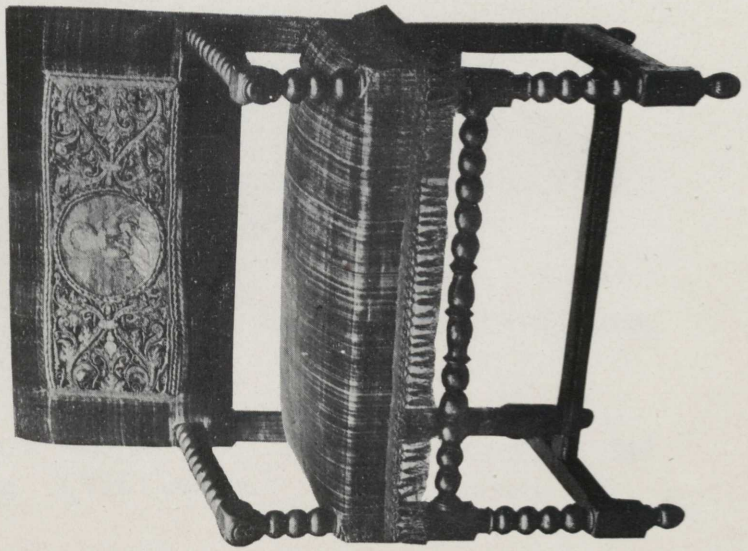
- 255 — OLD MINIATURE ON IVORY. Portrait of a court lady. Louis XVI period.
- 256 — OLD MINIATURE ON IVORY. Companion to the above.
- 257 — ANTIQUE CAMEOS. Representing a Roman emperor. XVI Century. Set of two.
- 258 — SILVER SNUFF BOX. Portrait of Louis XVI. Of the period.
- 259 — SILVER SNUFF BOX. Portrait of Marie Antoinette of the period.
- 260 — OLD RENAISSANCE BORDER. Embroidered on silk and gold, with pictures of saints.
- 261 — ANTIQUE CHIPPENDALE ARMCHAIR. Richly carved. Seat covered in red damask.
- 262 — OLD VELOUR CUSHION. With embroidered escutcheon on green velours.
- 263 — OLD EMBROIDERED PICTURE in silk, representing a saint. Velour frame.
- 264 — ANTIQUE ITALIAN CHAIR.
- 265 — OLD CHIPPENDALE TABLE. Very handsomely carved. Highly veneered.

- 266 — OLD PERSIAN VASE. Richly decorated.
- 267 — RARE PERSIAN JUG. Of fine shape. Richly decorated. XVI Century.
- 268 — RARE KACHAN VASE. Handsomely decorated.
- 269 — LOUIS XVI. TABLE. Of the period. Daintily carved. Rare marble top.
- 270 — OLD CHIPPENDALE CHAIRS. Richly carved. Set of two.
- 271 — OLD CHIPPENDALE ARMCHAIR. Daintily carved. Basket design. Seat covered in red damask.
- 273 — OLD QUEEN ANNE TABLE. Exquisite carving and design. Colored marble top.
- 274 — LOUIS XV CONSOLE. Daintily carved and gilded marble top.
- 275 — ANTIQUE RENAISSANCE CHAIR. Very richly carved. French, of the period.
- 276 — OLD RENAISSANCE BAHUT. Richly carved, with caryatids of the period.
- 277 — OLD RENAISSANCE BORDER. Embroidered in gold and silk, with pictures of saints.

- 278 — GENOESE VELVET PANEL. Floral medallion in reds and greens on old gold field.
- 279 — OLD CHASUBLE. Italian brocade design of flowers on red ground. Renaissance orphreys.
- 280 — OLD GERMAN TUMBLER. Quaintly decorated and painted. XVI. Century.
- 281 — OLD INKSTAND. For carrying in belt. Richly decorated with engraved bands.
- 282 — OLD GERMAN WEDDING CUP. In silver. Base is formed by the figure of the bride. Elaborate decorations.
- 283 — OLD CHIPPENDALE MIRROR. Oblong shape. Richly carved in wood. Coat of arms.
- 284 — OLD CHIPPENDALE ARMCHAIR. Richly carved. Swan design. Seat covered in green velour.
- 285 — QUEEN ANN DESK. Veneered in a variety of woods and beautiful design. Rare piece.
- 286 — ANTIQUE CHIPPENDALE ARMCHAIRS. Richly carved. Upholstered in fine red silk damask. Set of two.
- 287 — BRONZE ANDIRONS. Ornamented with silver and bronze figures; richly chiseled.

- 288 — NAPOLEONIC CHAIRS. Carved in mahogany; rich bronze mounts; set of six.
- 289 — LOUIS XVI. SALON TABLE. Very handsomely carved and gilded floral design; marble top.
- 290 — MARBLE FIGURE. Representing vintage. Carrara marble.
- 291 — OLD CHIPPENDALE CLOCK. Wooden frame, bronze trimmings.
- 292 — LOUIS XVI BERGERE. Handsomely carved and gilded. Upholstered in silk damask. Loose cushion.
- 293 — LOUIS XVI SALON SUITE. In cane. Richly carved. Seats covered with damask cushions. Sofa, 2 arm-chairs, 2 chairs.
- 294 — BRONZE ANDIRONS. Ornamented with figure of Diana on horseback. Set of two.
- 295 — DIRECTOIRE CONSOLE. Very handsomely carved and gilded in garlands of flowers.
- 296 — OLD IVORY BOUSSOLE. Complete. Seventeenth century.
- 297 — SILVER BON BON BOX. Richly chiselled with court scenes. Louis XVI period.

- 298 — ENAMEL SNUFF BOX. In gold case. Rich green and blue. Louis XVI period.
- 299 — OLD PORTRAIT OF CHRIST. In leather case.
- 300 — OLD ITALIAN TORCHIERE. Very handsomely carved in wood with Cupids. Polychrome.
- 301 — OLD ITALIAN TORCHIERE. Companion to the above
- 302 — ANTIQUE ITALIAN ARMCHAIR. Richly carved gilt top. Upholstered in silk damask.
- 303 — ANTIQUE CLOCK. In tortoise shell. Richly ornamented in bronze. Louis Philippe period.
- 304 — ANTIQUE ITALIAN ARMCHAIR. Seat and back covered in old red damask.
- 305 — ANTIQUE SIDE CHAIR. Covered with fine red damask.
- 306 — ANOTHER.
- 307 — OLD VENETIAN CUSHION. In velvet of reddish hues.
- 308 — OLD DAMASK CUSHION. Rich design of flowers on silver ground. XVII. Century.



OLD CHINESE PORCELAINS OF THE KANGHI
AND MING PERIODS.

*Persian and Italian Faiences of the XVI and XVII
Centuries.*

- 309 — OLD URBINO PLATE. Richly decorated escutcheon.
XVI Century.
- 310 — RARE FAENZA JUG. Decorations of fruits and
writing. XVII Century.
- 311 — CHINESE FLOWER STANDS. Highly glazed in green.
Ming period. Set of two.
- 312 — ITALIAN FAENZA JUG. Flower decorations of blue
and white. Lion holding a shield.
- 313 — ITALIAN FAENZA JUG. Companion to the above.
- 314 — OLD CHINESE PARROTS Highly glazed in green.
Ming period. Set of two.
- 315 — LARGE PERSIAN VASE. Handsomely decorated.
Fine design. Kashan, XVI Century.
- 316 — OLD BOUKHARA PLATE. In blue and white decora-
tions. XVI Century.
- 317 — CHINESE KYLINS. Richly glazed in green and
brown. Ming period. Set of two.

- 318 — RARE ETRUSCHAN DISH. Richly ornamented with mythological subjects. 200 B. C.
- 319 — OLD CHINESE JAR. In blue and white. Richly decorated. Kanghi period.
- 320 — OLD MONTELUPO PLATE. Richly decorated. Figure of angel in centre.
- 321 — OLD CHINESE VASE. Turquoise blue glaze. Very fine specimen.

PERSIAN AND ITALIAN FAIENCES OF THE
XVI. AND XVII. CENTURIES.

- 322 — OLD DRESDEN CHOCOLATE POT. Blue and white, old bronze mounts.
- 323 — OLD SAX FIGURE representing a group.
- 324 — CHINESE FIGURES. Richly glazed in brown and green-hues. Ming period. Set of two.
- 325 — CHINESE KYLINS. Glazed in green and brown hues. Ming period.
- 326 — CHINESE FIGURE in the shape of a Chimeras. Rich green hues. Ming period.
- 327 — CHINESE KYLINS. Richly glazed in brown and green hues. Ming period. Set of two.

- 328 — RARE ROMAN JUG. Green decorations on pale gray glaze. XVI Century.
- 329 — LARGE PERSIAN VASE. Richly decorated with design of trees. Kachan make.
- 330 — CHINESE FIGURES. Ming period. Set of two.
- 331 — CHINESE FIGURE. Representing a woman. Rich glaze. Kanghi period.
- 332 — LARGE CHINESE KYLINS. Richly glazed in brown and green hues. Ming period. Set of two.
- 333 — ANCIENT PERSIAN EWER. Blue glaze decorated in black. Boukhara pottery. XVI Century.
- 334 — OLD CHINESE TEAPOT. Richly glazed in green and brown hues. Ming period.
- 335 — OLD CARL THEODORE FIGURE. Representing a woman. Mark.
- 336 — OLD DRESDEN FIGURE representing a man. Mark.
- 337 — OLD CHINESE PARROTS. Highly glazed in green and white. Ming period. Set of two.
- 338 — RARE ETRUSCHAN DISH. With bas relief decorations of mythological subjects. 200 B. C.

- 339 — OLD CHINESE VASE WITH COVER. Famille Verte. Decorated with birds, flowers and figures. Rare specimen.
- 340 — OLD CHINESE BEAKERS. Richly decorated in blue and white, highly glazed. Kanghi period. Set of two.
- 341 — OLD FAENZA PLATTER. Rich decorations of blue and white. Fountain in centre. XVI Century.
- 342 — HISPANO MAURESQUE PLAQUE. Very richly decorate. XVI. Century.
- 343 — LARGE PERSIAN JAR of Boukhara pottery. Blue glaze, irridescent. Fine example.
- 344 — OLD CHINESE JARS. In blue and white. Highly glazed and decorated. Kanghi period. Set of two.
- 345 — OLD ITALIAN PLACQUE. In Deruta. Bas relief representing saints. XVI Century.
- 346 — CHINESE FIGURE. Richly glazed in green and brown. Ming period.
- 347 — OLD CHIPPENDALE TABLE. Of fine oblong design. Highly veneered and carved.
- 348 — OLD RENAISSANCE CASKET. Richly carved with caryatides of the period.

- 349 — ANTIQUE SCUDARI CUSHION. Red velour on gray silver ground.
- 350 — OLD RENAISSANCE BAND. Embroidered in silk and gold.
- 351 — ANTIQUE CHASUBLE. In rich silk brocade floral design. XVII Century.
- 352 — STAHL MANIPLE and burse.
- 353 — VELOUR PORTIERES. In beautiful green silk velour. Galloon borders. 2 pairs.
- 354 — OLD ADAMS TABLE. Highly veneered and richly carved.
- 355 — ANTIQUE ITALIAN SIDE CHAIR. Leather back and seat.
- 355a— OLD EMPIRE TABLE. Buck's head legs; richly carved; marble top.
- 356 — OLD ITALIAN HALL CHAIR. Elaborately carved and inlaid.
- 357 — PERSIAN POTTERY JAR. Blue and white decorations. XV Century.
- 358 — OLD LOUIS QUATORZE BRONZE FIGURES. Finely chiselled. Set of two.

- 359 — SCUTARI VELVET CUSHIONS. Red stripes on gray silver ground. Set of two.
- 360 — OLD CHIPPENDALE MIRROR. Very handsomely carved. Basket of flowers at top.
- 360a— OLD EMPIRE CONSOLE. Richly carved; gilded in parts; sphinx legs; marble top.
- 361 — OLD VELVET CUSHION of green Genoese velvet. Embroidered escutcheon.
- 362 — NAPOLEONIC SECRETARY. Carved in mahogany. Bronze mounts. Gray marble top.
- 363 — LOUIS XV VITRINE. Veneered in rosewood. Chiselled bronze mounts. Marble top. Mirror back.
- 364 — LOUIS XV SALON SUITE. Carved and gilded wood frames. Aubusson tapestry. 1 sofa, 4 armchairs, 4 chairs.
- 365 — OLD ADAMS PAINTED CHAIRS. In satinwood, daintily carved. Set of five.
- 366 — OLD ADAMS PAINTED ARM CHAIR. In satinwood, to match.
- 367 — HISPANO MARESQUE COVER. Richly embroidered silver on yellow ground.
- 368 — LOUIS XIV JARDINIÈRE VELOUR. Rich green hues.

- 369 — OLD ITALIAN CHASUBLE. In beautiful green shade. XVII Century.
- 370 — ANTIQUE RENAISSANCE CHAIRS. Covered in green velvet and embroidery of the period. Set of two.
- 371 — LOUIS XIV CLOCK SET. Gilt bronze. Finely chiselled.
- 372 — OLD EMBROIDERED PORTIERE representing Madonna and Child. American inscriptions.
- 373 — OLD SPANISH CHASUBLE. Richly embroidered in silver. XVII Century.
- 374 — ANTIQUE ITALIAN CHAIR. Covered in fine needlework in yellows and blues.
- 375 — OLD SATINWOOD ARM CHAIR. Cane seat and back.
- 376 — CONSTANTINOPLE PLAQUE. Blue and white design of large vase of flowers.
- 377 — OLD CHIPPENDALE TABLE with rail top. Highly veneered and richly carved.
- 378 — OLD CHIPPENDALE ARMCHAIR. Richly carved. Seat covered in red damask.
- 379 — OLD EMBROIDERED PICTURE representing the Madonna. Italian. XVI Century.

- 380 — HISPANO MAURESQUE COVER. Richly embroidered in silk and gold velours centre.
- 381 — RARE BOKHARA RUG of pink hues and fine texture. Size 4.10x3.9.
- 382 — ANTIQUE BELOOCHISTAN RUG. Very silky, soft hues. Size 6.9x3.4.
- 383 — OLD DAGHESTAN RUG. Rare specimen of the Tchi-tchi weave. Size 8.10x5.
- 583a— OLD GOTHIC DOORS. Rich in their simplicity; carved, and ornamented with brass nails of the period.
- 384 — OLD GHIORDES RUG. Mosque design on soft red ground. Size 5.10x4.5.
- 385 — ANTIQUE KOULA PRAYER RUG. From Damascus; soft red ground. Size 8.7x4.8.
- 386 — OLD SCHOOL LADIK RUG. Conventional design. Soft hues. Size 6.7x3.8.
- 387 — OLD SERREBEND HALL RUG. Choice small palm leaf pattern. Gray ground. Size 16.1x3.3.
- 388 — RARE PERSIAN CARPET of meshed weave. Floral design on rose ground. Size, 11.3x8.3.
- 389 — ANTIQUE BOUKHARA RUG of Khiva weave. Fine coloring. Rare. Size 9.7x6.7.

- 390 — RARE PERSIAN RUG. Conventional design; rich medallion; soft hues. Size 6.7x4.1.
- 391 — BEAUTIFUL PERSIAN SILK RUG. Finely woven. Rich hues. Rare design. Size 5.5x4.3
- 392 — OLD GHIORDES RUG. Prayer design. Soft hues. Size 6.4x4.2.
- 393 — ANTIQUE KOULA RUG. Rich blue ground. Moslem design. Size 6.3x4.2.
- 394 — OLD PERSIAN KAIEN RUG. Rare design of animals. Soft hues. XVII Century. Size 9.4x8.
- 395 — OLD PERSIAN JINIA RUG. Beautiful design of trees and flowers. XVII. Century. Size 19.8x8.1.
- 396 — OLD KERMANSHAH CARPET of very fine weave. Conventional design. Soft hues. Size 12x8.9.
- 397 — RARE AFGHANISTAN RUG of close fabric. Deep rose colors. Size 11.7x7.5.
- 398 — OLD KURDISH SENNA RUG. Fine Herati design. Rich coloring. Size 6.7x4.
- 399 — OLD BELOOCHISTAN RUG. Choice and silky weave. Size 4.9x3.6.

THIRD AFTERNOON'S SALE

SATURDAY, APRIL 11th, 1908.

Beginning promptly at 2.30 o'clock.

- 400 — OLD ITALIAN PLAQUE. Rich cream white glaze, with decoration of escutcheon.
- 401 — RARE PERSIAN JAR. Blue and ivory white decorations of mountains. Subdued.
- 402 — OLD PERSIAN JAR. Blue and white decoration of floral design; rare example.
- 403 — OLD FLINT LOCK GUN. Stock and butt elaborately inlaid with mother of pearl.
- 404 — OLD FLINT LOCK PISTOL. Carved wood stock and butt. Elaborate silver mounts.
- 405 — OLD ARAB GUN. Flint lock. Butt decorated in engraved silver bands.
- 406 — ANTIQUE BOCARA PLATE. Blue and white decorations.
- 407 — OLD PERSIAN PLATE. Showing a design of a woman playing the harp. Rare.

- 408 — RARE PERSIAN JUG AND PLATE. Richly decorated. XVII Century.
- 409 — OLD ROMAN JUG in glass, iridescent. Rare specimen.
- 410 — RHODIAN EMBROIDERY. Arabesque design; embroidered on red on linen.
- 411 — OLD EMBROIDERED COVER. Canary yellow satin, with bouquets of flowers in silver.
- 412 — VENETIAN VELVET PANEL. Floral medallion in red on tan ground.

Casket of Jewels.

- 413 — ANTIQUE BROOCH. Ornamented with large pearl, diamonds and rubies.
- 414 — PEARL NECKCHAIN. Oriental pearls connected by gold chain.
- 415 — LADIES CACHOU BOX. Ornamented with small rubies and diamonds. Crown.
- 416 — ANTIQUE PENDANT in silver. Ornamented with rubies and diamonds. Design of basket. XVI Century.
- 417 — PEARL AND DIAMOND RING. Fine Oriental pearl, surrounded by white diamonds.

- 418 — DIAMOND BROOCH of exquisite design, with 4 fine oriental pearls. Large amethyst in centre.
- 419 — PEARL AND DIAMOND DOG COLLAR. Several rows of Oriental pearls connected by 4 diamond bars.
- 420 — ANTIQUE PENDANT. Ornamented with sapphires and diamonds. Fine design.
- 421 — OLD PERSIAN MEDALLION. In rich enamel. Ornamented with pearls and precious stones.
- 422 — PEARL NECKLACE. Forming two rows of fine Oriental pearls; diamond and ruby clasps.
- 423 — DIAMOND AND ZAPHIRE LAVALIERE. Very fine diamonds and zaphires in an exquisite design.
- 424 — PEARL AND DIAMOND DOG COLLAR. Several rows of fine Oriental pearls connected by diamond bars.
- 425 — GOLD PURSE. Ornamented with rubies and diamonds.

Antique objects of value, Old English and Renaissance furniture, tapestries, textiles.

- 426 — FRENCH IVORY GROUP representing Madonna and child. XVI Century.
- 427 — OLD BRONZE INKSTAND. Richly chiseled; rare example of the XVI. Century.

- 428 — PORTUGUESE IVORY CARVING. Representing trees and animals. Sixteenth Century.
- 429 — BRONZE FIGURE representing Minerva. Fine dark patina. XVI Century.
- 430 — IVORY BAS RELIEF. Richly carved. Depicting St. Sebastian. Italian carving of the XVII Century.
- 431 — OLD CHIPPENDALE CHAIRS. Very daintily carved; seats covered in red leather. Set of six.
- 432 — ANTIQUE ITALIAN ARMCHAIR. Richly carved. Gilded top. Upholstered in green damask.
- 433 — OLD SATINWOOD TABLE. Beautifully inlaid and highly veneered; slender legs.
- 434 — OLD ITALIAN SEAT. In the shape of an X. Carved and gilded. Upholstered in yellow damask. High-
- 435 — ANTIQUE INLAID TABLE. In Marqueterie. Highly veneered. Side drawer.
- 436 — ANTIQUE RENAISSANCE ARMCHAIR. Covered in old Genoese velvet, and embroidered.
- 437 — ANTIQUE CARVED BAHUT. Rare design. Handsomely carved. Brass knobs.
- 438 — OLD CHIPPENDALE ARMCHAIR. Handsomely carved. Upholstered in striped silk damask.

- 439 — LOUIS SEIZE TABLE of the period. Daintily carved and gilded. Rare marble top.
- 440 — OLD CHIPPENDALE CHAIRS. Handsomely carved. Upholstered in silk stripe. Set of two.
- 441 — OLD GREENBY GIBBONS MIRROR. Very handsomely carved. Ornamented with swan.
- 442 — ANTIQUE CHURCH CANDELABRAS In metal, richly etched. XVI Century. Set of two.
- 443 — OLD METAL CANDELABRA. Rare specimen of the XVII Century.
- 444 — ANTIQUE FLORENTINE FRAME. Very richly carved. XVII Century.
- 445 — CARVED WOOD FIGURE representing Madonna. XVI Century.
- 446 — CARVED WOOD FIGURE representing a Roman holding the horn of plenty. XVII Century.
- 447 — OLD CHIPPENDALE SETTEE. Very handsomely carved, and very rare. Leather seat.
- 448 — ANTIQUE CHIPPENDALE CHAIRS. Richly carved. Seats covered in red silk damask. Set of seven.
- 449 — OLD BUHL CARD TABLE.

- 450 — RARE QUEEN ANN CHAIRS. Richly carved and partly gilded. Seats of red velour. Set of six.
- 451 — OLD RENAISSANCE COFFRET. Handsomely carved. XVII Century.
- 452 — EMBROIDERED ESCUTCHEONS in silk and gold. Set of two.
- 453 — OLD EMPIRE CLOCK SET. Richly chiselled. Clock ornamented with figure. Two candelabras.
- 454 — OLD ADAMS TORCHIERES. Painted in green and gold. Handsomely carved.
- 455 — OLD ITALIAN ARMCHAIR.
- 456 — CARVED WOOD PANELS. *Renaissance*. Set of two.
- 457 — CARVED WOOD PANELS. *Renaissance*. Set of four.
- 458 — OLD ENGLISH ARMCHAIR. Upholstered in old English needlework tapestry.
- 459 — OLD IVORY JEWEL CASSET. Richly etched in arabesque design. XVI Century.
- 460 — OLD PERSIAN JUG. Of very fine shape and richly decorated. XVI Century.

- 461 — ANTIQUE LACE ALTAR FRONTAL. Italian filch. Showing the adoration of the Magis. The Lord's prayer inscribed in border.
- 462 — ANTIQUE LACE COLLAR. Italian point de Venise. Fine filch. XVII. Century.
- 463 — ANTIQUE LACE CUSHION. Italian Point de Milan. XVII Century.
- 464 — LIMOGES ENAMEL SNUFF BOX. Colored marble body, gold rims. Enamel medallion. XVII Century.
- 465 — LIMOGES ENAMEL PLAQUE. Dated 1744. Representing Baptiste Faynot.
- 466 — LIMOGES ENAMEL PLACQUE. Showing the figure of the Virgin Mary. Signed Laudin. Fine coloring.
- 467 — LIMOGES ENAMEL PLAQUE. Representing an archevegue, insignia and escutcheon. XVII Century.
- 468 — OLD ELIZABETHAN CABINET. Handsomely carved, with caryatides of the period. Panels inlaid in Marqueterie.
- 469 — RENAISSANCE COMMODE. Richly carved, with caryatides of the period. Coat of arms. Carved knobs.
- 470 — OLD ADAMS MIRROR. Richly carved and gilded. Sphinx and Wedgwood top.



- 471 — OLD ITALIAN ARMCHAIR. Fine carving and gilt top. Upholstered in silk damask.
- 472 — OLD CHURCH CANDELABRAS. In metal, richly etched. Set of two.
- 473 — OLD BUHL CABINET. Very richly inlaid. Brass trimmings. Marble top.
- 474 — OLD BUHL GAME TABLE. Unusually large. Richly inlaid. Several drawers.
- 475 OLD ITALIAN HAND MIRROR. Cover in Limoges enamel of fine hues. Bronze frame, richly etched.
- 476 — ANTIQUE BRONZE FIGURE. Representing a gladiator. Finely chiselled and patina. XVII Century.
- 477 — OLD BRONZE FIGURE. In the shape of a cow. Exquisite execution; of the XVII Century.
- 478 — OLD CHIPPENDALE MIRROR. Most exquisitely carved Chinese design of the period. Chippendale glass.
- 479 — OLD ITALIAN LEATHER ARMCHAIR. Finely carved frame. Seat and back in old leather. XVI Century.
- 480 — OLD ITALIAN LEATHER ARMCHAIR. Companion to the above.

- 481 — OLD CARVED WOOD FIGURE representing a saint holding a book. French carving. XVI Century.
- 482 — OLD CARVED WOOD FIGURE representing a saint preaching. French carving of the XVI Century.
- 483 — OLD ITALIAN CHURCH LAMP. In metal, richly etched and repousse. Early XVII Century.
- 484 — OLD ELIZABETHAN CABINET. Handsomely carved, with caryatides of the Renaissance period. Rare specimen.
- 485 — ANTIQUE RENAISSANCE PANEL. In carved wood. Four niches, with carvings of saints. French.
- 486 — ANTIQUE RENAISSANCE PANELS. In carved wood, with caryatides of the period. Very rare. Set of two.
- 487 — OLD RENAISSANCE CHAIRS. Covered with antique Genoese velvet and embroidery. Set of two.
- 488 — OLD GOTHIC STALLE. In carved wood. Massive.
- 489 — ANTIQUE CARVED WOOD FIGURE representing the Virgin and child. French carving from Nantes church.
- 490 — OLD ADAMS STANDS. In carved wood and gilt design of beliers beautifully executed. Set of two.

- 491 — RENAISSANCE FRONTAL. Richly carved, with figures and caryatides of the period. Rare specimen.
- 492 — OLD ENGLISH OAK TABLE. Richly carved. Rare design. XVII Century.
- 493 — OLD RENAISSANCE MARRIAGE CHEST. Massive walnut. Richly carved. Escutcheon.
- 494 — OLD CHURCH CANDELABRAS. In metal, richly etched and repousse. XVII Century. Set of two.
- 495 — OLD CARVED WOOD ESCUTCHEONS. Of the Renaissance period. Beautifully carved. Set of two.
- 496 — LOUIS QUINZE ARMCHAIR. Richly carved and gilded. Upholstered in old damask.
- 497 — LOUIS QUINZE COMMODO. Veneered in Marqueterie. Old bronze mounts. Bombe shape. Marble top.
- 498 — OLD LOUIS QUINZE CLOCK. In rosewood. Exquisite design. Rich bronze mounts of the period.
- 499 — SEVRES VASE. Boucher decorations. Bronze mounts. Signed Maxaut.
- 500 — LOUIS SEIZE BANQUETTE. Covered with old Beauvais tapestry of the period. Design of flowers of beautiful hues. Medallion represents the historical belier. Carved and gilded frame.

- 501 — SEVRES VASE. Decorated with garlands of flowers. Medallion of Marie Antoinette. Signed C. Stecher.
- 502 — LOUIS XVI SALON SUITE. Richly carved and gilded. Upholstered in Aubusson tapestry. Boucher subject. Sofa, four armchairs, four chairs, banquette and fire screen to match.
- 503 — OLD MARQUETERIE COMMODE. Very richly inlaid. Dainty design. Slender legs.
- 504 — OLD ITALIAN ARMCHAIR. Rare shape. Richly carved. Covered in old Genoese velvet. Gilt top.
- 505 — OLD ITALIAN ARMCHAIR. Companion to the above.
- 506 — OLD QUEEN ANN SETTEE. Upholstered in old English needlework. Richly carved frame of the period.
- 507 — OLD QUEEN ANN ARMCHAIRS. Upholstered in old English needlework of the period. Set of two.
- 508 — OLD CHIPPENDALE TABLE. Very handsomely carved. Caryatides of angels at the sides. Slender legs. Claw feet.
- 509 — ANTIQUE GENOESE CUSHION. In beautiful Jardiniere velvet. Very rare.
- 509a— EQUESTRIAN GROUP. Representing Napoleon; fine chiseling; marble base.

- 510 — OLD SATINWOOD TABLE. Richly carved and gilded. Painted panels by Angelica Kaufman.
- 511 — ANTIQUE ITALIAN ARMCHAIR. Beautifully tooled in gold on leather.
- 512 — GOTHIC CHASUBLE in rich velvet of red and silver on gold ground.
- 513 — OLD LOUIS QUINZE COMMODE. Richly veneered in Marqueterie. Bombe design. Old bronze mounts of the period.
- 514 — OLD RENAISSANCE SCREEN. In three panels of Brussels tapestry, depicting Roman passages of history.
- 515 — OLD RENAISSANCE COMMODE. Very handsomely carved with figures and caryatides of the period.
- 516 — RARE GOTHIC BANDS. In embroidery. Escutcheon with pictures of saints. Set of two.
- 517 — OLD RENAISSANCE MARRIAGE CHEST. Handsomely carved, with scroll design. Escutcheon.
- 518 — ANTIQUE POLONAIIS RUG. A rare specimen of the XVI Century. Woven in silk. Beautiful design.
- 519 — OLD RENAISSANCE ARM CHAIR. Covered in old Genoese velvet and tapestry back.

- 520 — OLD CARVED WOOD TORCHIERES. Elaborately carved, gilded, and polychrome. Set of two.
- 521 — ANTIQUE BRONZE ANDIRONS. Massive brass tops. Wrought iron frames. Rare. Set of two.
- 522 — OLD CHIPPENDALE CHAIRS. Very handsomely carved, and seats covered in old English needlework. Set of ten.
- 523 — OLD MARQUETERIE COMBINATION SECRETAIRE. Richly inlaid and carved. Numerous drawers. Handsome bronze mounts of the period.
- 524 — OLD RENAISSANCE CHAIRS. Covered with antique Genoese velvet and embroidery. Set of two.
- 525 — OLD RENAISSANCE COFFRET. Very elaborately carved, with caryatides of the period.
- 526 — OLD RENAISSANCE STAND, formed of panels of caryatides and figures.
- 527 — CARVED WOOD RENAISSANCE PANEL. Handsome carving depicting allegorical scenes. Gilded and polychrome.
- 528 — GOTHIC HOLLAND CABINET. Daintily carved old iron lock and bands.
- 529 — OLD SATINWOOD TABLE. Handsomely inlaid and highly veneered. Slender legs.

- 530 — LOT OF GENOESE VELVET. About 40 yards of beautiful Jardiniere velvet.
- 531 — ANTIQUE SILVER TRYPTIQUE. Elaborately chiselled, representing passages of the life of Christ. XVI Century.
- 532 — ANTIQUE CARVED TOWER OF PISA. In ivory. Fine carving of the XVI Century.
- 533 — OLD BRONZE FIGURE representing Bacchus. Fine chiselling of the XVII Century.
- 534 — DELBA ROBIA TABLET representing a passage of Christ, inscriptions. XVI Century. Rare.
- 535 — OLD GOTHIC CROSS in bronze. Handsome chiselling of the period.
- 536 — BISHOP'S CROSIER IN BRONZE. Beautifully chiselled. Ornamented with figure of saint. XVI Century.
- 537 — OLD RENAISSANCE TAPESTRY PANEL. From Brussels loom of the period. Depicting a Roman festival.
- 538 — OLD RENAISSANCE HALL CHAIR. Handsomely carved with caryatides of the period.
- 539 — OLD CHASUBLE. Italian. XVI. Century. Richly embroidered on green and red. Portrait of Madonna.

- 540 — OLD ITALIAN FLAG. Of the Sienna Battle. Beautiful colors. Coat of arms. Tree pierced.
- 541 — OLD ITALIAN FLAG. From Pistoia racing of the olden days.
- 542 — OLD BEAUVAIS TAPESTRY PANEL. From the original cartoon by Mignard. Period of Louis XIV. Children at play.
- 543 — OLD BEAUVAIS TAPESTRY PANEL. Of fine texture, and beautiful colorings. Verdure and subjects. Seventeenth Century.
- 545 — OLD RENAISSANCE CHAIRS. Covered in red Genoese velvet and embroidery.
- 546 — OLD RENAISSANCE SECRETAIRE. Exquisitely carved with figures and caryatides of the period. Combination drawers. Rare specimen.
- 547 — ANTIQUE RENAISSANCE TAPESTRY. Of Brussels looms. Girl playing the harp.
- 548 — IVORY AND SILVER TANKARD. Bas relief depicting La Vendange. German carving of the XVII. Century.
- 549 — CARVED WOOD ANGELS. Carved and polychrome. Of the XVI. Century. Set of two.
- 550 — OLD FLEMISH TAPESTRY PANEL. Renaissance, depicting Roman passages of history. Very fine texture and colors.

- 551 — OLD RENAISSANCE PRIE DIEU. In carved wood; covered with old Gobelin tapestry; rare.
- 552 — ANTIQUE GOTHIC CHAIRS. Straight backs. Covered in rich embroidery. Set of two.
- 553 — OLD ADAMS MIRROR. Very richly carved and gilded. Sphinx top. Wedgwood plaque.
- 554 — LIMOGES ENAMEL PLAQUE. Depicting a rustic scene; beautiful colorings and execution. Seventeenth Century.
- 555 — OLD CHURCH LAMP. In metal. Richly etched and repousse. XVII. Century.
- 556 — OLD CARVED WOOD TORCHIERE. Very handsomely carved and gilded.
- 557 — ANTIQUE EMBROIDERED PICTURE. Representing the Virgin. Carved wood frame.
- 558 — OLD RENAISSANCE TAPESTRY PANEL. Depicting passages of Roman history. Fine texture and coloring.
- 559 — OLD CARVED WOOD TORCHIERE. Very handsomely carved.
- 560 — GOTHIC BRONZE FIGURE. Representing a princess of the period. Fine execution.

- 561 — OLD RENAISSANCE MARBLE BASES. Of columns of fine sculpture of the period. Set of two.
- 562 — OLD RENAISSANCE ESCUTCHEON. In carved wood. Massive carvings. Rampant lion.
- 563 — OLD GOTHIC MARRIAGE CHEST. Handsome carving of the period.
- 564 — OLD ITALIAN PANEL. In wood. Richly inlaid with figures, depicting a Roman war scene.
- 565 — ANTIQUE MARBLE BAS RELIEF. Representing Madonna, child and saint. XVI. Century. Rare.
- 566 — ANTIQUE MARBLE VENUS.
- 567 — OLD CARVED WOOD NICHE. Handsomely carved and gilded. XVII. Century.
- 568 — RENAISSANCE BAHUT. Handsomely carved. Of the period.
- 569 — OLD PAINTING ON PORCELAIN. In marble medallions. Set of two.
- 570 — BRONZE FIGURES OF CENTAURS. Fine dark patina, and fine chiseling of the XVII. Century. Set of two.
- 570a— RARE OLD SILK RUG. Of very fine texture. Design of birds and animals. Soft hues. Persian insignia of lions. Size 5.5x3.10.

- 571 — GOTHIC TAPESTRY. Beautiful floral design, with birds, soft hues, greens and tans.
- 572 — ANTIQUE CHASUBLE. Red and gold Genoese velvet in beautiful floral pattern.
- 573 — ALTAR CROSS OF ROCK CRYSTAL. Carved and mounted on gilt baize. Decoration in bronze.
- 574 — ANTIQUE ITALIAN CHAIR. In leather. Elaborately tooled in gold, decorated with escutcheon.
- 575 — LIMOGES ENAMEL PLAQUE. Representing a Biblical passage. XVII Century.
- 576 — LIMOGES ENAMEL PLAQUE. Representing saints. Seventeenth Century.
- 577 — OLD JADE DAGGER. Fine jade handle; leather scabbard, with bronze trimmings.
- 578 SILVER AND GOLD SNUFF BOX. Ornamented with precious stones. Allegorical subject.
- 579 — OLD DERUTA PLAQUE. Representing Madonna and Child. Seventeenth Century.
- 580 — ANTIQUE COPE. Of Venetian brocade. Gothic design in gold and green ground.
- 581 — OLD PERSIAN DAGGER. In enamel. Jade handle. XVI. Century.

- 582 — RARE JADE AND JEWELLED SWORD. Handsome jade handle. Inlaid at the pommel with large emeralds, rubies and diamonds. Scabbard of gilt silver, similarly jeweled. From the Hakhi Bey sale; very rare.
- 582a— ANTIQUE CARVED WOOD FIGURE. Of St. Patrick. From an old church in Mantz.
- 582b— ANTIQUE CARVED WOOD FIGURE of Christ.
- 583 — RARE GOTHIC TAPESTRY. Depicting personages and lotus flowers. Old gobelin fabric; fine specimen.
- 584 — UNIQUE IRIDESCENT ROMAN GLASS. Unusually large and fine specimen.
- 585 — OLD BRONZE BUST OF ROMAN EMPEROR. Fine dark patina. Italian work of the XVI Century. Marble base.
- 586 — CARVED WOOD FIGURE. Of a saint, holding a cross. French carving of the XVI Century.
- 587 — OLD FAENZA CRUCHE. In blue and white decoration, with lettering; fine specimen of the XVII Century.
- 588 — OLD FRENCH NEEDLEWORK PICTURE. Representing a rustic scene. Dated 1811.
- 589 — ANTIQUE ITALIAN CHASUBLE. In silk brocade in floral design.

- 590 — STAHL MANIPLE AND BURSE.
- 591 — OLD NAPOLEONIC SALON SUITE. Richly carved and gilded openwork. Sofa, 4 arm chairs, 4 chairs. Rare set.
- 592 — IVORY FIGURE. Representing a saint. Rare carving of the XVI Century.
- 593 — BRONZE FIGURE. Representing Venus Cerese. Italian. XVII. Century.
- 593a— OLD RENAISSANCE TABLE. Richly carved legs, with caryatides. Massive top.
- 594 — IVORY FIGURE. Representing the Infant Christ. Spanish carving of the XVI. Century.
- 595 — IVORY GROUP. Representing Madonna and Child. French carving of the XVI. Century.
- 596 — LIMOGES ENAMEL PLAQUE. Representing a person of nobility. XVII. Century.
- 597 — OLD EMBROIDERED ESCUTCHEON. In gold and silver, showing a martyr with palm and cross.
- 598 — OLD ITALIAN COPE. Of cardinal red silk, trimmed with band of fine gothic velvet.
- 599 — HISPANO MORESQUE PLAQUE. Elaborate scroll, and bird decoration, copper lustre.

- 600 — ANOTHER.
- 601 — LOUIS XV. LIBRARY TABLE. Rose kingwood inlaid. Heavy bronze mounts. Leather top.
- 602 — FINE CARRARA MARBLE GROUP. Representing cupids playing musical instruments.
- 603 — RARE BRONZE FIGURE. Representing Caesar and the Dauphin. Fine chiseling and patina.
- 604 — BRONZE AND SILVER CANDLESTICKS. Richly chiseled with figure of Satyrs. Set of two.
- 605 — OLD GLASS MOSQUE LAMP. Of Arab design. Blue green glass decorated in enamels and inscriptions.
- 606 — ANTIQUE SPANISH CHASUBLE. In rich velvet orphreys of Renaissance embroidery, with figures of the Madonna and saints.

Garden Marbles, Statuary and Bronzes.

- 607 — MARBLE BENCH. Colored Carrara marble. Lion sides.
- 608 — MARBLE BUST. Representing "Julius Caesar." Fine sculpture.
- 609 — MARBLE GARDEN FONT. Fine design and sculpture.

610 — MARBLE BUST. Of a woman, beautifully executed.

611 — MARBLE TABLE. Of very rich design.

612 — MARBLE VASE.

613 — MARBLE VASE.

614 — MARBLE MANTELPIECE.

615 — MARBLE FONT. Fine design and sculpture.

616 — BRONZE GROUP. Representing Victory.

617 — MARBLE COLUMN. For the above.

618 — DELLA ROBBIA BAS RELIEF. In fine enamels, representing a passage of the life of Christ.

619 — MARBLE FIGURE. Baccante.

620 — MARBLE FONT.

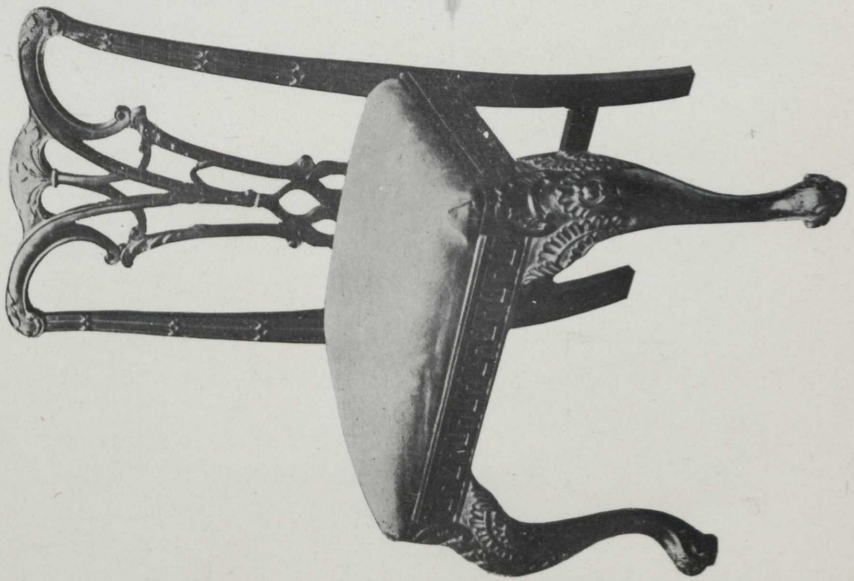
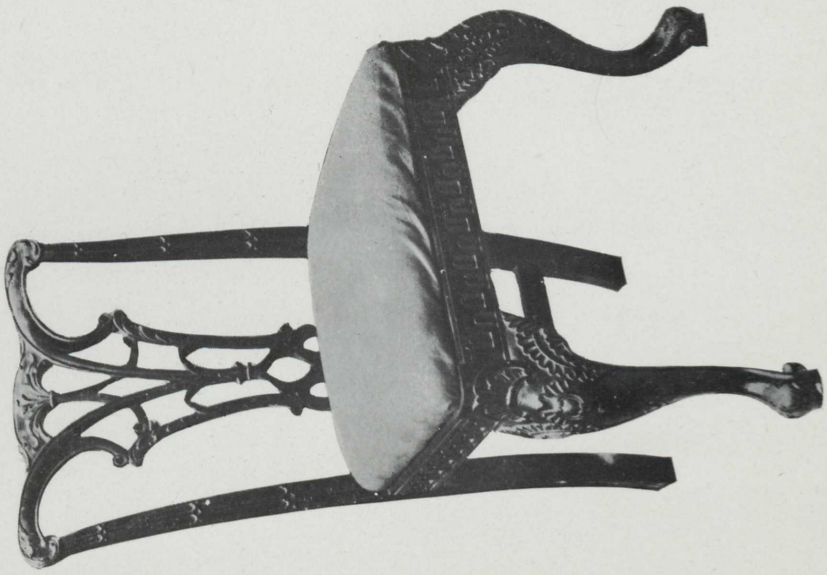
621 — MARBLE BENCH.

622 — MARBLE GROUP.

623 — MARBLE COLUMN. For the above.

Fine Antique Floor Coverings.

- 624 — OLD BELOOCHISTAN RUG. Camel's hair weave.
Size 4.6x3.0
- 625 — ANTIQUE ARADAN KALI RUG. Rare border; dark
blue ground. Size 6.10x4.2.
- 626 — FINE PERSIAN SENNAH RUG. Rich coloring and
design. Size 6.3x4.8.
- 627 — OLD GHORDEZ RUG. Mosque design; rare cream
ground. Size 5.3x4.2.
- 628 — ANTIQUE LADIC RUG. Soft red ground; fine tex-
ture. Size 5.10x3.11.
- 629 — RARE PERSIAN FERREGHAN RUG. Soft green medal-
lion. Size 6.7x3.8.
- 630 — OLD PERSIAN SERREBEND RUG. Blue ground; con-
ventional design. Size 13.4x6.0.
- 631 — RARE PERSIAN RUG. Rich design; cream ground.
- 632 — FINE PERSIAN SILK RUG. Closely woven; conven-
tional pattern; soft hues.
- 633 — ANTIQUE PERSIAN RUG. Rich design; rich border.
Soft hues. Size 5.9x4.3.



- 634 — ROYAL AFGHANISTAN RUG. Beautiful deep rose color effect. Size 10.7x7.2.
- 635 — RARE PERSIAN HALL RUGS. Of Tabriz weave; diamond medallions on cerise ground; pendants. Size 16.5x2.4.
- 636 — RARE PERSIAN MESHED CARPET. Diamond medallion on pink field; fine texture; from the imperial looms. Size 18.9x16.4.
- 637 — OLD CHINESE RUG. Of Turkostan weave; soft, rich colors. Size 10.8x5.8.
- 638 — OLD GHORDEZ RUG. Blue ground; mosque pattern; very fine. Size, 5.0x4.3.
- 639 — LARGE ANTIQUE PERSIAN RUG. On reddish ground and blue border. Size 14.6x7.4.
- 640 — OLD SHIRVAN RUG. Very fine weave; soft colors. Size 4.11x3.11.
- 641 — RARE PERSIAN SILK RUG. Very closely woven specimen of the old school. Size 5.9x4.3.
- 642 — OLD CHINESE TURKOSTAN RUG. Very rare specimen and size. Size 14.7x7.0.
- 643 — ANTIQUE ISPAHAN SILK RUG. Prayer design; fine texture. Size 5x3.9.

644 — RARE OLD ISPAHAN RUG. Of fine texture and design. XVI Century. Size 10.5x4.6.

645 — ROYAL PALACE KERMAN RUG. Fine medallion effect on ivory field; fine border. Size 14.9x10.

CATALOGUE

OF

The Gallery of Paintings

OF

OLD AND MODERN MASTERS

TO BE SOLD

Saturday Evening, April 11th

PROMPTLY AT 8.15 O'CLOCK.

no 24

total at 25⁰⁰

no 33 up to 190 sell at 200.

no. 49. " " 300 Run to 1800.

Gallery of Paintings

SATURDAY EVENING, APRIL 11th,

At 8.15 O'clock

1 GALLOIS (V.) Paris

Still Life.

21 1-2 x 25 1-2

2 MORRELL (C. K.) Paris

Chickens.

19 x 26

3 LEVY (Edouard) Paris

Landscape.

14 1-4 x 19

4 HENRION Paris

Mousquetaires

21 1-4 x 25 1-2

5 MASCARI (Gaston) Paris

Canal at Amsterdam.

Honorable Mention.

21 1-4 x 25 1-2

6 ITALIAN SCHOOL

1500-1600

Madonna and Child.

6 1-2 x 7 3-4

7 TIEPOLO—SCHOOL OF

1600.

Religious Subject.

7 1-2 x 8 1-2

8 BEAUDOIN (Jean) Paris

Antonine Mouille

Honorable Mention.

21 1-2 x 29

9 VAN MAARBECK The Hague

Scene on the Maas

20 x 24 1-2

10 BOUCHER—SCHOOL OF
Allegorical Subject

14 3-4 x 9 1-4

11 JOHN RUSSELL

1745-1806.

Lady of Quality.

9 3-4 x 12 3-4

12 PORTIELJE (Edward) Antwerp

Gold Medals: Antwerp, 1888, Brussels, 1890, Amsterdam,
1891. Member of the Royal Academy of Belgium.

Confidants.

15 x 18

13 ANGLADE (Gaston) Paris

Les Champs de Ble.

Paris Salon.

19 1-2 x 25 1-2

14 ECOLE FRANCAISE

1830.

Portrait of a Lady.

25 1-2 x 29 3-4

15 TRYPTIQUE PAINTING

Italian School, 1600.

Passages of the Life of Christ

16 MIERVELT (Hendrik)

The Hague

Landscape and Cattle

29 x 20

17 JIMMERMANS (L.)

Paris

Marine

En rade de Grand Camp

10 1-2 x 13 3-4

18 RICHET (Leon)

Paris

Landscape

Gold Medal. Paris Salon.

18 1-2 x 24

19 BOUCHER (Francois)—SCHOOL OF

1800.

Confidence

12 1-2 x 16

MARIE LOUISE ELIZABETH VIGÉE LEBRUN



"LA LAITIÈRE"

20 BOUCHER (Francois)—SCHOOL OF

1800.

Confidence

21 SANTORO (Rubens)

Paris

Honorable Mention, Paris, 1896.

Canal Vanaxel, Venice

9 1-2 x 14

22 CORTES (Edouard)

Paris

Night View of Paris

Honorable Mention, 1889. Gold Medal, 1900.

26 x 35 1-2

23 GESNE (A. de)

Paris

Hunting Dogs

Gold Medal, 1887.

13 x 16 1-2

24 AMBERGER—SCHOOL OF

Dutch School, 1700.

Portrait of a Man and Wife

12 x 14 1-2

- 25 MINOR (Robert C.) New York
Evening Landscape
24 x 20
- 26 DE KUIJPER (Johannes) The Hague
Landscape and Sheep.
25 1-2 x 21 1-2
- 27 NATTIER—SCHOOL OF
1800.
Portrait of a Lady
24 x 29
- 28 PINI (Ricardo)
Italian School, 1640-1712.
Ruins
14 1-2 x 8 1-2
- 29 LE ROY (J.) Paris
Kittens
Honorable Mention.
15 x 10

30 DELPY (H. J.) Paris

Sundown

Hors Concours.

17 1-2 x 29 1-2

31 MAGNUS (Camille) Paris

Scene in the Barbizon Woods

22 x 15

32 BOUDIN (Eugene), deceased Paris

Medals, Paris, 1881 and 1883. Gold Medal, 1889, E. U.
Chevalier of the Legion of Honor, 1892. Hors Concours.

On the French Coast

24 x 17

33 SANTERRE

1700.

Portrait of a Lady

23 1-2 x 28

34 SIR THOMAS LAWRENCE

English School. 1769-1830.

Portrait of Lord Byron

- 35 MARIE (Jacques) Paris
Honorable Mention, 1887. Gold Medal, 1900. Hors
Concours.
Landscape—Vue de Riviere
17 1-2 x 20
- 36 SCHULTZ (Adrian) Paris
Honorable Mention. Gold Medal, 1889.
Le Vieux Chene
- 37 DE BEUL (Franz) Brussels
Member of the Royal Academy of Belgium.
Shepherd and Flock
31 1-2 x 25 1-2
- 38 HUGUET (Victor Pierre) Paris
Medals: Paris, 1873 and 1882. Member of the So-
ciety of French Artists. Hors Concours.
Caravan En Route—Algiers
36 1-2 x 25 1-2
- 39 GUARDI—SCHOOL OF
Italian School, 1700.
5 1-2 x 9

40 ITALIAN SCHOOL

1830.

Portrait of Paolura Bonaparte Borghese in her Tivoli
Villa—Rome

41 HOPPNER

English School, 1800.

Portrait of a Lady

31 x 40

42 BERNE-BELLECOUR (Etienne Prosper) Paris

Born at Boulogne. Medal, 1869. First Class, 1872.
Chevalier, Legion of Honor, 1878. Medal, 1878. Silver
Medal, 1889. Bronze Medal, 1900. Hors Concours.

Thoughts of Home

10 1-2 x 14 1-2

43 HENNER (Jean Jacques) Paris

Prix de Rome, 1858. Medals, 1863, 1865 and 1866.
Chevalier of the Legion of Honor, 1873. Officer of the
Legion of Honor, 1878. Medal of the First Class, 1878,
E. U. Member of the Institute of France, 1889. Hors
Concours, 1889, E. U.—Medal of Honor, 1898. Commander
1898. Grand Prix, 1900, E. U. Hors Concours. Grand
Officer of the Legion of Honor, 1903. Honorary Member
of the Society of French Artists.

Penitent Magdalen

9 1-2 x 14

44 DEL MAZZO-JUAN (B. M.)

Spanish School, 1600.

Mary Magdalen

35 x 48

45 ITALIAN SCHOOL

1600.

The Holy Family

20 1-2 x 27

46 DULUARD (Leon)

Paris

Hors Concours. Gold Medals, 1889-1901.

Mousquetaire

26 x 32

47 ERNEST (Rodolphe)

Paris

Pupil of Feuerbach. Medal, Universal Exhibition, 1889.

On the Terrace

28 1-2 x 36 1-2

48 DE KUIJPER (Johannes)

The Hague

Returning Home

25 1-2 x 21 1-2

49 GENTILE (Bellini)

Italian School. 1429-1507. Student of Venetian Art.
Brother of Jacopo Bellini.

Portrait of Doge Marcellus

14 x 17

50 INNESS (Geo.) N. A.

New York

Evening Near Montclair

44 x 30

51 SIR PETER LELY

1617-1680.

Countess of Rockingham

30 x 34

52 TURNER (David)

English School, 1800.

Marine

12 1-2 x 18

53 SIMONIDY (Michel)

Paris

Mention Honorable, Paris, 1899. Silver Medal, 1900,

E. U. Chevalier of the Legion of Honor, 1901.

Harmony of Evening

36 1-2 x 23 1-2

54 HAGBORG (Auguste) Paris

Medals: Paris, 1879. Hors Concours, 1889. Exposition Universelle. Chevalier of the Legion of Honor, 1883. Hors Concours. Officer of the Legion of Honor, 1902.

Norwegian Fisher Girls

39 x 28 1-2

55 SCHOTT (Max) Paris

Hors Concours. Gold Medal, 1889.

Ideal Head

21 1-2 x 26

56 HENNER (Jean Jacques) Paris

Gold Medals. Officer of the Legion of Honor.

The Red Shawl

10 1-2 x 13 3-4

57 RICHET (Leon) Paris

Hors Concours. Officer of the Legion of Honor. Gold Medals.

Sunset

25 x 36

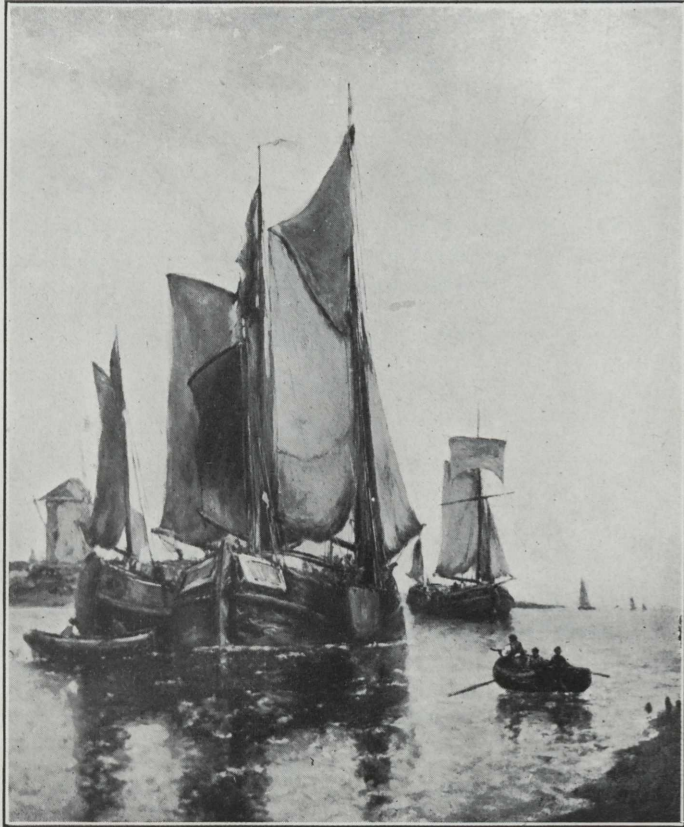
58 ANGLADE (Gaston)

Honorable Mention. Paris Salon.

Valee de la Creuse

14 3-4 x 18

P. J. CLAYS



CALM ON THE SCHELDT

59 PIOT (Adolphe)

Paris

Honorable Mention, Paris, 1890. Member of the Society of French Artists.

Ideal

20 x 26

60 WYANT (Alexander H.), N. A.

Deceased

By the death of Alexander H. Wyant in 1892 American art lost one of the most poetic of its landscape painters. His memory is identified with the Adirondacks.

Autumn Near Gilead, Conn.

15 x 21

61 DUPRE (Julien)

Paris

Medals, Paris, 1880 and 1881. Silver Medal, 1889. Exposition Universelle. Chevalier of the Legion of Honor, 1892. Hors Concours.

The Coming Storm

43 1-2 x 36 1-2

62 HOPPNER

English School, 1800.

Portrait of Mrs. Lane

50 x 40

63 DUPRAB (A.) Paris

Gold Medal. Hors Concours.

Venice Canal

18 x 25 1-2

64 DIDIER-POUGET (William) Paris

Honorable Mention, Paris, 1890. Medals, Third Class, 1896. Legion of Honor, 1900. Bronze Medal, 1900. Exposition Universelle. Member of the Society of French Artists.

Vallee de la Crezue, Heather in Bloom, Morning Effect

36 x 30

65 CLAYS (Paul Jean) Brussels

Medals, Paris, 1867. Legion of Honor, 1875. Officer of the Legion of Honor, 1881. Medal, Brussels, 1851. Chevalier of the Order of Leopold. Member of the Royal Academy of Belgium.

Becalmed on the Scheldt

19 1-2 x 23 1-2

66 WILLMS (Albert) Paris

Hors Concours.

Water Color.

Hunter's Dogs

10 1-2 x 14

67 ITALIAN SCHOOL

1500.

Dyptique Painting on Panel, Representing Passages
of Christ

24 1-2 x 18

68 RICHARDS (W. T.) N. A.

New York

Marine.

Evening

20 x 10

69 MONCHABLON (Jan), deceased

Paris

Mention Honorable, Paris, 1885. Silver Medal, 1889,
E. U. Chevalier of the Legion of Honor, 1895. Silver
Medal, 1900, E. U. Hors Concours.

Near Chatillon—Vosges

14 x 18 1-2

70 SCHENCK (Auguste Frederick Albert) Deceased
Paris

Medals: Paris Salon, 1865; Legion of Honor, 1888.
Cavalier of the Order of Christ of Portugal. Cavalier of the
Order Isabella la Catolica. Medal, Centennial Exhibition,
1876.

Sheep in Snow Storm

25 1-2 x 21 1-2

71 ITALIAN SCHOOL

1500.

The Holy Family

14 3-4 x 18 1-2

72 ANGLADE (Gaston)

Paris

Honorable Mention. Paris Salon.

Field Flowers

19 1-2 x 29

73 VERNON (Paul)

Paris

Hors Concours. Chevalier of the Legion of Honor.

Landscape

6 3-4 x 8 3-4

74 MIERVELT (Hendrik)

The Hague

Landscape and Cattle—Holland

29 x 20

75 LAUGEE (Georges)

Paris

Medals: Paris, 1881 and 1889, E. U. Hors Concours.

Member of the Society of French Artists.

The Gleaners

25 1-2 x 21 1-2

JULIEN DUPRE



THE APPROACHING STORM

76 BROUSE (P.)

Paris

Honorable Mention.

Sheep

15 x 18

77 DELPY (H. J.)

Paris

Gold Medals. Hors Concours.

Landscape

16 1-4 x 25 1-2

78 ENGLISH SCHOOL

1800.

Portrait of a Lady

9 1-4 x 12 1-2

79 MASCART (V.)

Paris

Honorable Mention.

Amsterdam

15 x 21 1-2

80 GUARDI—SCHOOL OF

Italian School, 1700.

Architecture

In Three Panels.

9 1-2 x 12 1-4

81 WATTEAU—SCHOOL OF

French School, 1800.

The Seasons

In Two Panels.

21 1-2 x 27

82 CLAIR (Charles)

Paris

Landscape

20 x 25 1-2

83 GALLOIS (V.)

Paris

Still Life

21 1-4 x 26

